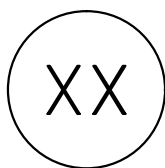
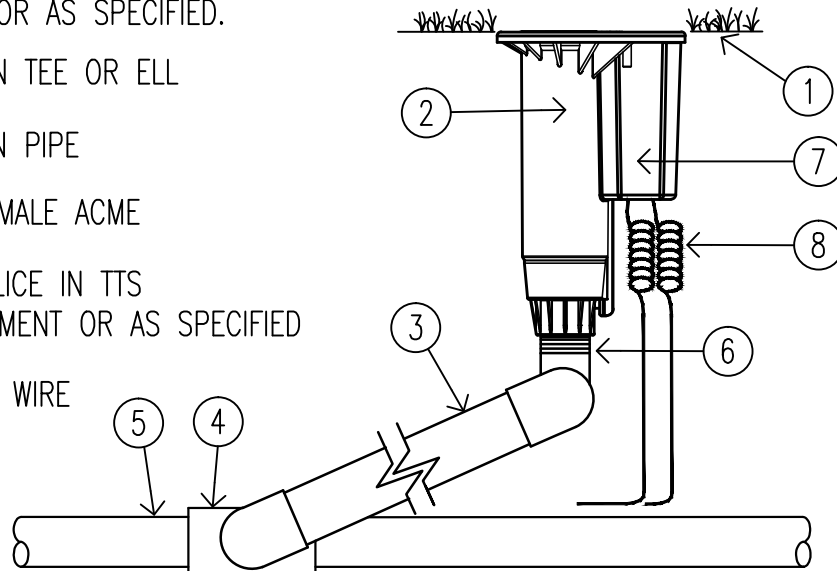


- ① FINISH GRADE
- ② MODEL G880E
FULL CIRCLE ROTOR
- ③ UNITIZED PVC SWING JOINT
1-1/2" OR AS SPECIFIED.
- ④ SUB MAIN TEE OR ELL
- ⑤ SUB MAIN PIPE
- ⑥ 1-1/2" MALE ACME
- ⑦ WIRE SPLICE IN TTS
COMPARTMENT OR AS SPECIFIED
- ⑧ CONTROL WIRE



G880E GEARED ROTOR

SCALE: 1.5" = 1'-0"

Hunter® IRRIGATION DETAIL